

# Full Spectrum Energy Medicine

“Playing the Fields”... the subtle energy fields...

Vol. 2, No. 1

March 2009

## Color, Light and Sound in Healing

If you experience sessions at Full Spectrum Energy Medicine, seeing colored light when your eyes are closed is a common occurrence. What does it mean?

Light vibrates 40 octaves higher than audible sound. Sound affects the body directly. We also use sound regularly to induce deeper levels of healing. Light activates spiritual healing which filters down through the layers of the subtle energy body into the physical. When you see light as color swirling or pulsating, spiritual healing is taking place. When you see colored shapes, it means physical and and spiritual healing are taking place.

These same phenomena can occur with long-distance sessions.



Colored light in the visible spectrum catalyzes spiritual healing.

### Nutritional Supplements available here

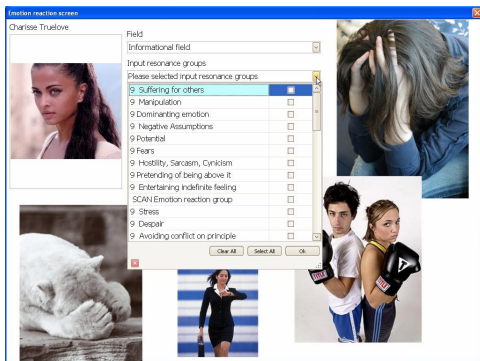
- Allergy Research
- Apex Energetics
- Biotics
- Guna
- Heel
- Kirkman Labs
- Metagenics
- Pekana
- Pleomorphic Products
- Thorne Research
- Unda
- Xymogen

and other quality brands

### Inside this issue:

Color Light	1
Sound	
Informational Medicine	1
Detox Codex	2
Environmental	
Dental Connection	3
Tips	3
Hair Regrowth	4

## Informational Medicine



At left: Emotion Reaction Screen from a CoRe Inergetix ® analysis.

If you are interested in learning more about identifying potential emotional causes and/or reactions that might be affecting your health, ask us about a CoRe long-distance session.

Informational Medicine is effective for animals, too!

### Detoxification for renewed wellbeing

Proper order for detoxification

- 1. Colon
- 2. Candida
- 3. Parasites
- 4. Bacteria and vaccination residue, chemicals
- 5. Kidneys
- 6. Liver Cleanse
- 7. Lymph
- 8. Heart/Circulatory
- 9. Pancreas
- 10. Lung
- 11. Virus Cleanse
- 12. Brain

Beginning a lifestyle change or detox program on a new moon increases chances of success.

New Moons: March 26th  
April 24th and May 24th



Neti pot—a mainstay tool for yoga practitioners - can help relieve nasal congestion. Use saline solution to easily drain stuffed-up sinuses.

Spring flowers bring with them pollen, and that means discomfort for many. Remember to boost your immune system.

HEEL has some very effective homeopathic remedies to address seasonal allergies. We always keep them in stock.

Call us at (610) 275-3371 to be prepared.

### Health Freedom—Codex Alimentarius

Codex is a body of law created 40 years ago by the World Health Organization (WHO) and the Food and Agriculture Organization (FAO).

If you don't already know about the crusading efforts of some dedicated to educating the people about natural solutions, access a report from Dr. Rima E. Laibow, M.D. on divesting the Food and Drug Administration of its food oversight functions due to its failure to carry on its statutory obligations. There is a movement to revamp the FDA, whose administration acknowledges its critical shortcomings (flaws?) If we are to continue to heed Hippocrates' advice to let our food be our medicine and our medicine our food, we must be aware of our choices for change. GMOs pose a very real threat to nutrition—our basic source of physical sustenance.

Find out how current legislation might compromise your rights to healthcare choice.

Knowledge is power. Know which choices are available.

Visit: <http://www.healthfreedomusa.org>

### Environmental Safety — EMFs

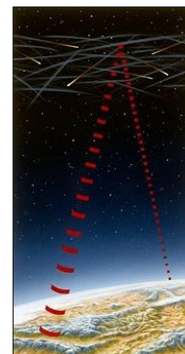
Electromagnetism has long been used for healing purposes; but today, excessive magnetic fields can cause harm. Learn more about this important issue that affects us all. Go to: <http://www.electromagnetichealth.org/>

#### Current clients of Full Spectrum Energy Medicine

If you would like to monitor appliances in your home, we offer the EMF meter (at right) for you to borrow for up to 3 days. It is simple to use, and you will know where to implement changes if necessary. Call us if you would like more details.



EMF Tri-Field Meter



Waveforms can be good or bad

The Dental Connection

Charts of Tooth-Organ Acumeridian Relationships															
Traditional Chinese Meridian Organs															
Heart, Small Int., Circulation/Sex, Triple Warmer	Stomach, Pancreas	Lung, Large Intestine	Liver, Gallbladder	Kidney, Bladder	Kidney, Bladder	Liver, Gallbladder	Lung, Large Intestine	Stomach, Spleen	Heart, Small Int., Circulation/Sex, Triple Warmer						
Associated Western Medicine Joints, Organs and Glands															
Right Shoulder, elbow, hand (wrist), Scapulae, foot, toes, Middle Ear, Right heart, Rt. Duodenum, terminal ileum, CNS, Anus/Vagina	Right TMJ, anterior hip/knee, medial ankle, Sinus: Maxillary, Oropharynx, Larynx, esophagus, Rt. Side of Stomach, #2 Pancreas, #2 Thyroid, Right Breast	Right Shoulder, elbow, hand (radial), foot, big toe, Sinus: Paranasal and Ethmoid, Bronchus, Nose, Right lung, Right side of Large Intestine, #1 Right Breast	Right Post. knee, hip lateral ankle, Sinus: Sphenoid, Palatine, Tonsil, Eye, Hypothal., Testes, prostate, testicle, rectum	Right Post. knee, Sacroiliac joint, Post. ankle, Sinus: Frontal, Pharyngeal, Tonsil, Pinnae, Right kidney, bladder, ovary, uterus, prostate, testicle, rectum	Left Post. knee, Sacroiliac joint, Post. ankle, Sinus: Frontal, Pharyngeal, Tonsil, Pinnae, Left kidney, bladder, ovary, uterus, prostate, testicle, rectum	Left Post. knee, hip lateral ankle, Sinus: Sphenoid, Palatine, Tonsil, Eye, Hypothal., Left Liver, biliary ducts	Left Shoulder, elbow, hand (ulnar), foot, big toe, Sinus: Paranasal and Ethmoid, Bronchus, Nose, Left lung, Left side Large Intestine, Left Breast	Left TMJ, anterior hip/knee, medial ankle, Sinus: Maxillary, Oropharynx, Larynx, esophagus, Left Side of Stomach, #14 Thyroid, #12 Pancreas, Left Breast	Left Shoulder, elbow, hand (wrist), Scapulae, foot, toes, Middle Ear, Left heart, Jejunum, ileum, CNS, Ant. pituitary						
1	2	3	4	5	6	7	8	9	10	11	12	13	14	15	16
17	18	19	20	21	22	23	24	25	26	27	28	29	30	31	32
Traditional Chinese Meridian Organs															
Heart, Small Int., Circulation/Sex, Triple Warmer	Lung, Large Intestine	Stomach, Pancreas	Liver, Gallbladder	Kidney, Bladder	Kidney, Bladder	Liver, Gallbladder	Spleen, Stomach	Lung, Large Intestine	Heart, Small Int., Circulation/Sex, Triple Warmer						
Associated Western Medicine Joints, Organs and Glands															
Right Shoulder, elbow, hand (wrist), Scapulae, foot, toes, Middle Ear, Right heart, Rt. Duodenum, terminal ileum, CNS	Right Shoulder, elbow, hand (ulnar), foot, toes, Middle Ear, Sinus: Maxillary, Oropharynx, Bronchus, Nose, Right lung, Right side of Large Intestine	Right TMJ, anterior hip/knee, medial ankle, Sinus: Maxillary, Oropharynx, Larynx, esophagus, Rt. Side of Stomach, #20 Uterus, Testes, Right Breast	Right Post. knee, hip lateral ankle, Sinus: Sphenoid, Palatine, Tonsil, Eye, Ovaries, Testes, Rt. Liver, gallbladder	Right Post. knee, Sacroiliac joint, Post. ankle, Sinus: Frontal, Pharyngeal, Tonsil, Pinnae, Right kidney, bladder, ovary, uterus, prostate, testicle, rectum	Left Post. knee, Sacroiliac joint, Post. ankle, Sinus: Frontal, Pharyngeal, Tonsil, Pinnae, Left kidney, bladder, ovary, uterus, prostate, testicle, rectum	Left Post. knee, hip lateral ankle, Sinus: Sphenoid, Palatine, Tonsil, Eye, Ovaries, Testes, Left Liver, biliary ducts	Left TMJ, anterior hip/knee, medial ankle, Sinus: Maxillary, Oropharynx, Larynx, esophagus, Left Side of Stomach, #21 Uterus, Testes, Left Breast	Left Shoulder, elbow, hand (radial), foot, big toe, Sinus: Paranasal and Ethmoid, Bronchus, Nose, Left lung, Left side large intestine	Left Shoulder, elbow, hand (wrist), Scapulae, foot, toes, Middle Ear, Left heart, Jejunum, ileum, CNS, Ant. pituitary						

**Acumeridian Tooth-Organ Relationships** from various sources including Geddisch and Klinghardt (www.NaturalTherapy.com). Compiled by Dr. Ralph Wilson.

Did you know that each tooth connects to an organ?

If you have discomfort in a tooth, it could signal a blockage or possible problem in the associated organ. Until you can get to see your dentist, pack a small piece of gauze wetted with bentonite (the kind used for colon cleanse) and leave it in place for 4-5 hours. If there is an infection, the bentonite will pull a dark-colored fluid into the gauze. Discard the gauze. Repeat this procedure for 3-4 days. **For your own 8-1/2" x 11" printable chart above, go to our website:**

<http://www.fullspectrumenergymedicine.com/Resources>. Click Tooth-Organ Chart.

**TIP:** If you have a cold or the flu, use disposable toothbrushes to avoid recontamination. When you have a cold, it is a good idea to discard the toothbrush and begin with a new one. Standard dental hygiene recommendation is to change your toothbrush every 6 weeks anyway.



**P. O. Box 802**  
**Blue Bell, PA 19422**  
**Phone: 610-275-3371**  
**E-mail: info@FullSpectrumEnergyMedicine.com**  
**http://www.FullSpectrumEnergyMedicine.com**

**To:**

"Playing the Fields" with your friends is fun. Tell them about this newsletter.

More valuable information in our e-newsletters.

Subscribe at:

[www.FullSpectrumEnergyMedicine.com](http://www.FullSpectrumEnergyMedicine.com)

## Restore Hair Regrowth with laser & microcurrent



29-year old male with moderate hair loss prior to treatment with laser and microcurrent.



After 12 sessions (35–40 minutes each) Between treatments, special balm is applied to the scalp every night to regenerate hair growth.



In progress.

"Playing the Fields"

Vol. 2 No. 1 March 2009

**Anti-Aging Medicine**

Printed on recycled paper

